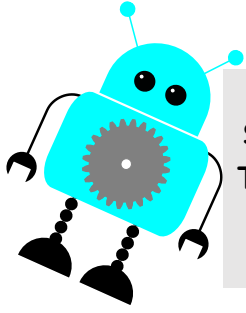


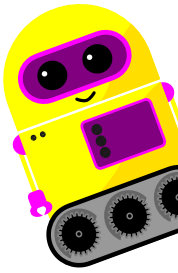
Using the suffixes -er and -est in adjectives



Suffixes are letters added to the end of a root word to make a new word. The suffixes -er and -est are used to compare two or more people, places, animals or objects.

- 1) Add the suffixes -er and -est to the adjectives below to make a new word.

Root word	Suffix -er	Suffix -est
short		
nice		
angry		
smart		
wide		
friendly		



- 2) Circle the correct adjective to complete each sentence.

A giraffe is taller / tallest than an elephant.

Sophie is the older / oldest child in my class.

The heavier / heaviest rainfall is in June.

My trainers are dirtier / dirtiest than my brothers.

- 3) Write a sentence using each of the words in the word bank below.

later	fluffier	strongest	craziest
-------	----------	-----------	----------

